

estate agents **auctioneers**

**hollis  
morgan**



**Flat 20, Satchfield Court Richeson Walk, Henbury, Bristol, BS10 7AZ**

**£175,000**

A fantastic opportunity to acquire this lovely apartment in Henbury featuring private parking and a balcony.

- First Floor Apartment
- Private Balcony
- Allocated Parking Space
- Open Plan Kitchen/Living
- Close proximity to Blaise Castle & Henbury Golf Club
- Secure Bike Storage
- Gas Central Heating
- Council Tax - A
- Double Glazing

#### The Property

Located in a popular and convenient part of Henbury, offered to the market this immaculate one-bedroom apartment is perfect for first-time buyers or investors alike.

Situated on the first floor of a modern development, the property first greets you with an entrance hallway, located on the rear side is an open plan kitchen/living arrangement. The kitchen provides various storage cupboards with space for a fridge/freezer, washing machine, oven and hob, followed by informal seating on the opposite side of the room perfect for relaxing.

Accommodation in the property consists of a very spacious double bedroom with ample room for a wardrobe and dressing table whilst enjoying pleasant green views from your own private balcony. Further facilities present a very well-appointed and neutral 3-piece bathroom with a shower over the bath.

An additional benefit of this property is a private parking space for 1 car.

#### Location

In close proximity to the popular Blaise Castle Estate providing you with leisurely walks, whilst being surround by convenient amenities including The Mall at Cribbs Causeway just a short 5-minute drive away. Furthermore, commuting has never been easier with the M5/M4 motorway networks at your doorstep.

#### Further Information

Tenure - Leasehold

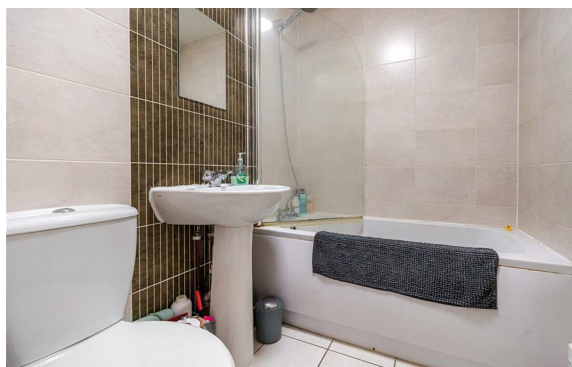
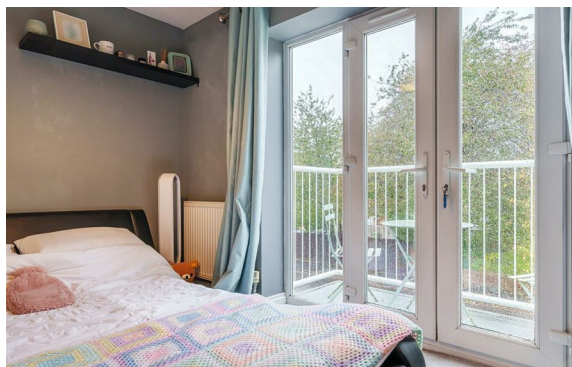
Lease years remaining - 984

Service Charge - £40 PCM

Management Company - BNS

#### Please Note

Hollis Morgan endeavour to make our sales details clear, accurate and reliable in line with the Consumer Protection from Unfair Trading Regulations 2008 but they should not be relied on as statements or representations of fact and they do not constitute any part of an offer or contract. All Hollis Morgan references to planning, tenants, boundaries, potential development, tenure etc is to be superseded by the information provided in your solicitors enquiries. It should not be assumed that this property has all the necessary Planning, Building Regulation or other consents. Any services, appliances and heating system(s) listed may not been checked or tested and you should rely on your own investigations. The seller does not make any representation or give any warranty in relation to the property and we have no authority to do so on behalf of the seller. Please note that in some instances the photographs may have been taken using a wide angle lens.

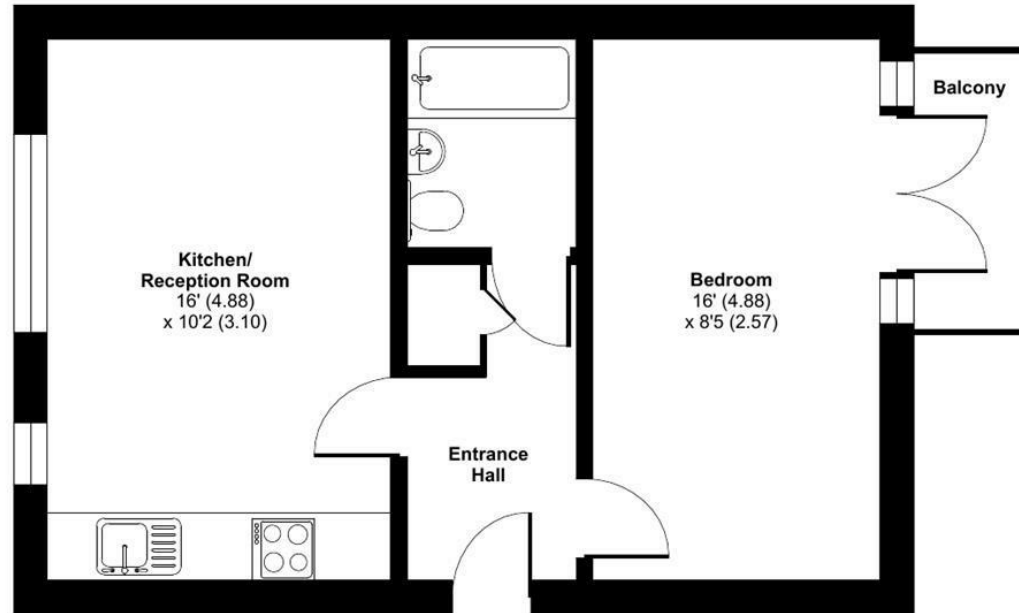




# Richeson Walk, Bristol, BS10

Approximate Area = 394 sq ft / 36.6 sq m

For identification only - Not to scale



FIRST FLOOR



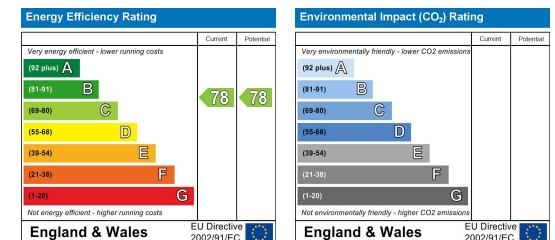
Floor plan produced in accordance with RICS Property Measurement Standards incorporating International Property Measurement Standards (IPMS2 Residential). © n̄cheom 2023. Produced for Hollis Morgan. REF: 1052525



TEL | 0117 933 9522 | 9 Waterloo Street, Clifton, Bristol BS8 4BT

[www.hollismorgan.co.uk](http://www.hollismorgan.co.uk) | [post@hollismorgan.co.uk](mailto:post@hollismorgan.co.uk)

Hollis Morgan Property Limited, registered in England, registered no 7275716  
Registered address, 5 Upper Belgrave Road, Clifton, Bristol BS8 2XQ



hollis  
morgan

---